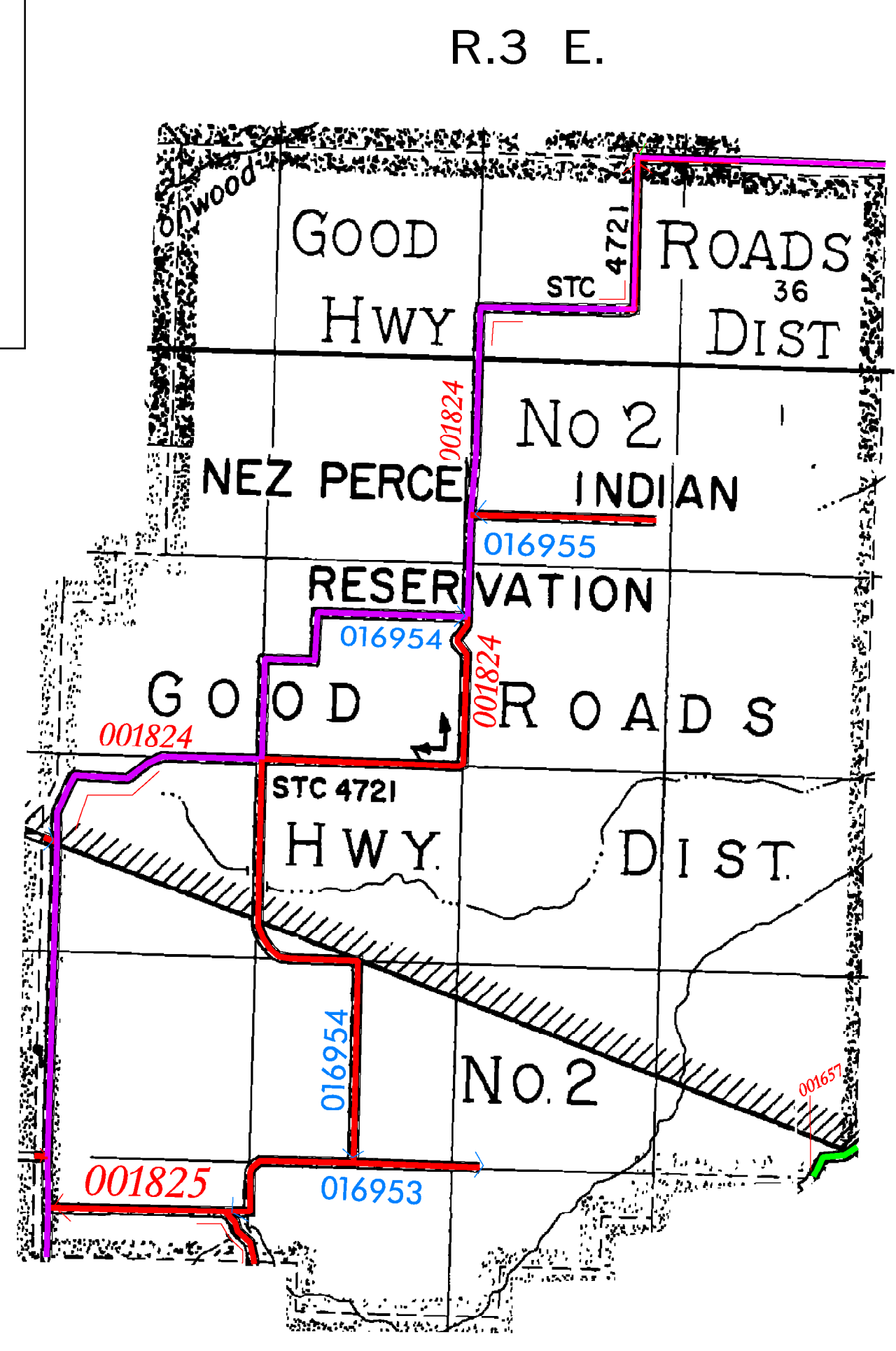


COLOR CODE		
Grey	Grey	Road Surface and Jurisdiction undefined or unknown
B	Brown	Unimproved
C	Blue	Earth - Graded and drained
E	Red	Gravel - Graded and drained
F	Magenta	Asphalt treated gravel less than 1"
G-1	Green	Road or Cold Plant mix Asphalt
G-2	Aqua	Hot mix asphalt pavement
J	Olive Green	Other (e.g., concrete, cobble stone or brick surface)
Purple	Purple	Delete road from Jurisdiction (Road still exists)
Yellow	Yellow	Delete road from Map and Jurisdiction (Road obliterated - no longer exists)
PUBLIC RIGHT-OF-WAY		
Grey	Grey	RIGHT-OF-WAY WITH ROAD
Grey	Grey	RIGHT-OF-WAY WITHOUT ROAD



2008 ROAD SURFACE MAP

GOOD ROADS HIGHWAY DISTRICT

IDAHO COUNTY

IDAHO

Local Road System Revised October 1, 2008



...vdsurface\goodrds_sur.dgn 02/11/2004 04:28:58 PM