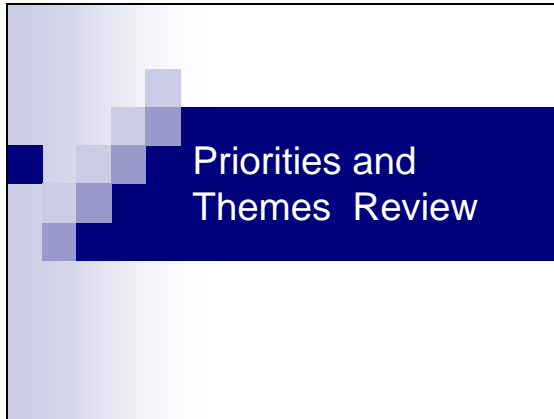
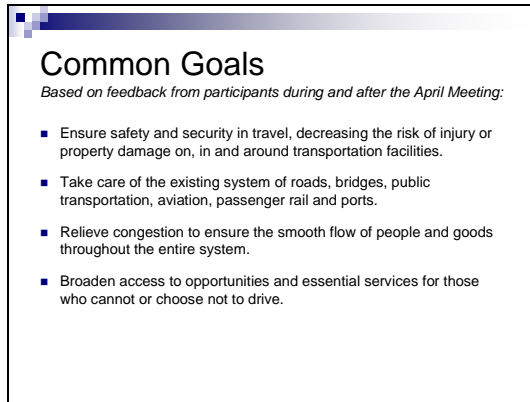


1



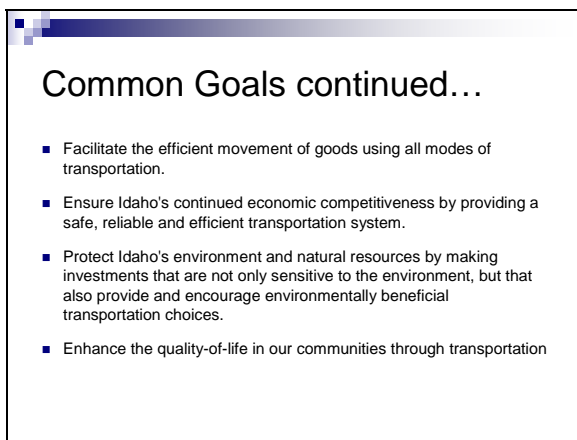
Lisë reviewed the transportation priorities the Members developed at the April meeting – Safety, Land Use Linked to Transportation System, Long-Term Planning and Growth, and Cost Benefit.

2

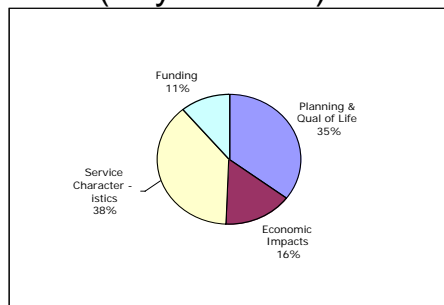


She suggested the following guiding principle be added to the beginning of the recommendations to capture the Forum's priorities.

3



April 28 Break Out Session Results (Key Themes)



4

When considering transportation policies, methods for revenue generation, and infrastructure projects, the following priorities shall be used.

Priority Topics Identified

■ Planning & Quality of Life

Issue	Topics	Total Votes for Topic
Planning & Quality of Life Issues	Total for this issue: 38 of 106 possible	
	Land use linked to transportation system	10
	Long-term plan/growth (coordinated plans)	7
	Quality of life	3
	Environmental impact (air quality)	3
	Environmental impact (air/water quality)	2
	Right project or solution	2
	Sustainability	2
	Address needs of all people	2
	Regional significance/community values	2
	Historical preservation	2
	Population – system use (changing demographics)	2
	Balance reality with vision	1

5

LAND USE LINKED TO TRANSPORTATION SYSTEM -- Protect Idaho's environment and natural resources by making investments that are not only sensitive to the environment, but also provide and encourage environmentally beneficial transportation choices.

LONG-TERM PLANNING AND GROWTH (coordinated plans) -- Enhance the quality-of-life in our communities through transportation. Relieve congestion to ensure the smooth flow of people and goods throughout the entire system. Broaden transportation opportunities and essential services for those who cannot or choose not to drive.

Priority Topics Identified

■ Economic Impacts

Issue	Topics	Total Votes for Topic
Economic Impacts	Total for this issue: 17 of 106 possible	
	Cost/Benefit	7
	Economic Growth	6
	Facilitate commerce	2
	Rural Economic development	2

6

COST BENEFIT – Ensure Idaho's continued economic competitiveness by providing a safe, reliable, and efficient transportation system of roads, bridges, public transportation, aviation, rail, and ports. Facilitate the efficient movement of goods using all modes of transportation.

7

Priority Topics Identified

- Service Characteristics

Service Characteristics	Total for this issue:	41 of 106 possible
Safety	17	
Multi-modal solution	5	
Infrastructure (roads, water, sewer, etc.)	4	
Multiple uses of same infrastructure/right of way	3	
Congestion relief	3	
Statewide system (circulation)	3	
Public transit	2	
Transportation corridors (N to S, E to W)	1	
Acceptable level of service	1	
Secondary & feeder roads for rural development	1	
Move freight to rail – efficient freight movement	1	

SAFETY -- Ensure safety and security in travel by decreasing the risk of injury or property damage on, in, and around transportation facilities.

8

Priority Topics Identified

- Funding Issues

Funding Issues	Total for this issue:	12 of 106 possible
How to Pay—Funding	8	
Leverage federal funds (Medicaid and Public Transit)	2	
Transportation users pay for system	1	
Available resources for construction	1	

The How to Pay—Funding priority was combined with the previous Economic Impacts priority and discussed as one.

9

The Top Five Priorities for Consideration

- Land use linked to transportation system
- Long-term plan/growth (coordinated plans)
- Safety
- Cost Benefit
- How to Pay - Funding

In Summary....

- As the Board and other decision makers in Idaho consider new policies, methods for revenue generation and new projects, these goals and priorities, that the Transportation Investment Forum members have identified as being important, should be part of that consideration.