

PLAN  
NO SCALE

3"x3"x3/8" ERECTION ANGLES @ 3'-0" FOR SUPPORT OF JOINT ANGLES IN ABUTMENT BACKWALL. REMOVE AFTER BACKWALL CONCRETE PLACEMENT.

7/8" x 1 3/4" MACHINE BOLTS, FOR SUPPORT OF ERECTION ANGLES @ 3'-0". BOLTS AND ANGLES TO BE PLACED AFTER DECK CONCRETE PLACEMENT. REMOVE IMMEDIATELY AFTER BACKWALL CONCRETE PLACEMENT.

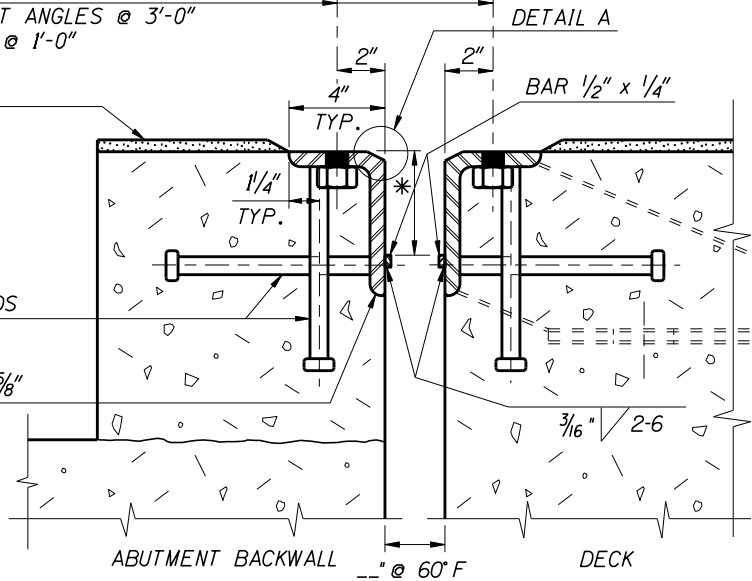
7/8" x 1/2" SET SCREWS, HEXAGON SOCKET REMOVE FOR MACHINE BOLTS @ 3'-0" AFTER DECK CONCRETE PLACEMENT.

1" HOLES WITH NUTS TACKWELDED TO UNDERSIDE OF JOINT ANGLES @ 3'-0" AND 1" BLEEDHOLES @ 1'-0"

SEAL COAT (ROADWAY ITEM)

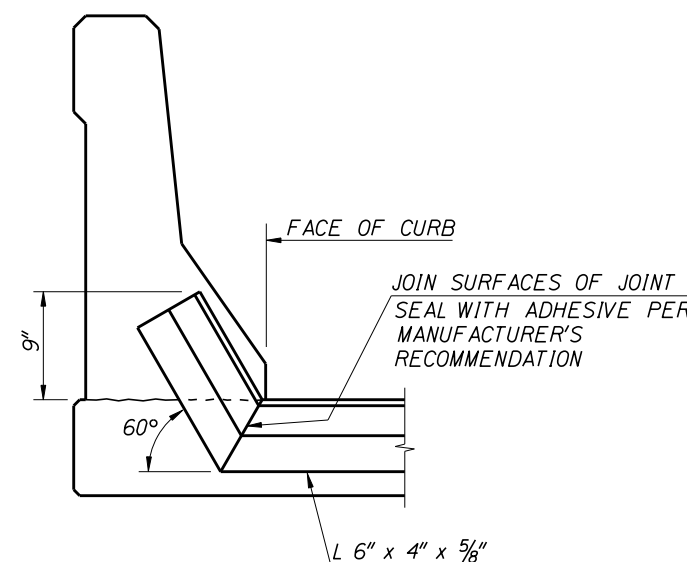
3/4" x 8" WELD STUDS

JOINT ANGLE 6"x4"x5/8" TYP.



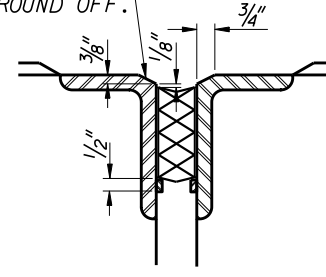
SECTION A-A  
3"=1'-0"

ANGLES SHALL BE SUPPORTED TO MAINTAIN CORRECT ORIENTATION DURING PLACEMENT OF CONCRETE. (STEEL GIRDER SUPPORT SYSTEM SHOWN.)

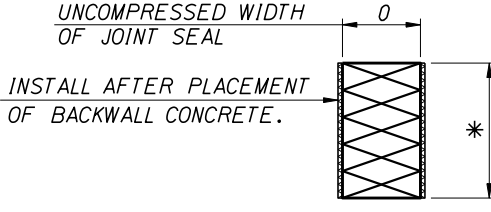


TYPICAL CURB SEAL DETAIL  
NO SCALE

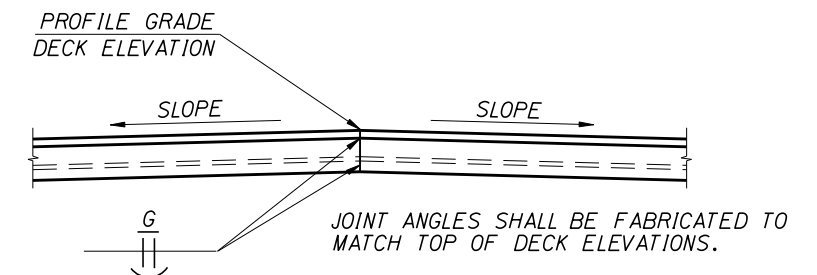
BEVEL MAY BE FLAME CUT PROVIDED THE BURRS, SPATTERS, AND PROJECTIONS ARE GROUND OFF. ALL WORK SHALL BE DONE IN THE SHOP.



DETAIL "A"  
NO SCALE



JOINT SEAL DETAIL  
NO SCALE



CROWN DETAIL  
NO SCALE

EXPANSION JOINT NOTES

- ALL STRUCTURAL STEEL SHALL CONFORM TO AASHTO M270, GRADE 36.
- THE TOP OF THE JOINT ANGLE SHALL BE INSTALLED PARALLEL TO THE PROFILE GRADE.
- JOINT ANGLES SHALL HAVE A MINIMUM THICKNESS OF 5/8".
- CONTRACTOR SHALL PROVIDE SUITABLE SUPPORT DURING DECK POUR AND SHOP PLANS SHALL INCLUDE SUPPORT SYSTEM DETAILS.
- DIMENSIONS \* MARKED ARE PER MANUFACTURER'S RECOMMENDATIONS.
- THE EXPANSION JOINT SHALL BE ADJUSTED 0" FOR EVERY 10° CHANGE IN TEMPERATURE FROM THE MEDIAN TEMPERATURE OF 60°F AT THE TIME OF INSTALLATION OF THE JOINT.
- WHEN A DECK OVERLAY IS SPECIFIED, JOINT INSTALLATION SHALL BE COMPLETED PRIOR TO PLACING THE DECK OVERLAY.
- JOINT SEAL SHALL BE CONTINUOUS BETWEEN FACE OF CURBS.
- WHEN THE JOINT ANGLE EXCEEDS 60' IN LENGTH, A MAXIMUM OF TWO FIELD SPLICES WILL BE PERMITTED. THE FIELD SPLICE SHALL NOT BE LOCATED IN THE WHEEL PATH, AND THE LOCATION SHALL BE SHOWN ON THE SHOP DRAWINGS.
- THE SEAL SHALL BE INSTALLED AS PER MANUFACTURER'S RECOMMENDATIONS USING AN ADHESIVE LUBRICANT. ADHESIVE SHALL MEET THE REQUIREMENTS OF ASTM D-4070.
- PREFORMED EXPANSION JOINT SEAL SHALL CONFORM TO AASHTO M-297.
- SHOP DRAWINGS SHALL BE SUBMITTED TO THE ENGINEER IN ACCORDANCE WITH SECTION 504 AND SHALL INCLUDE COMPLETE DIMENSIONS AND DETAILS OF FABRICATION INCLUDING AN ERECTION DIAGRAM. MATERIALS BEING USED SHALL BE CLEARLY SPECIFIED. BEFORE PROJECT COMPLETION, THE CONTRACTOR SHALL FURNISH THE ENGINEER A 22" X 34" REPRODUCIBLE MYLAR COPY OF THE SHOP DRAWINGS.
- THE COMPLETED JOINT ASSEMBLY, INCLUDING ALL COMPONENTS AND SUBASSEMBLIES, SHALL BE FABRICATED BY ONE MANUFACTURER.

APPROXIMATE STEEL WEIGHT 48 LB./FT.

RECOMMENDED MANUFACTURERS OF THE SHOWN JOINT ASSEMBLY						
LOCATION	MANUFACTURER	STYLE	SEAL SIZE - INCHES		INSTALLATION WIDTH NORMAL TO JOINT	
			WIDTH	DEPTH	MIN.	MAX.

REVISIONS			
NO.	DATE	BY	DESCRIPTION

DESIGNED	SCALES SHOWN ARE FOR 34" X 22" PRINTS ONLY	ORIGINAL SIGNED BY:
DESIGN CHECKED	CADD FILE NO.	
DETAILED		
DWG. CHECKED		
CORRECTIONS	DRAWING DATE:	DATE SIGNED: DATE
	JUNE 2006	

ORIGINAL SIGNED BY: \_\_\_\_\_  
DATE SIGNED: DATE \_\_\_\_\_  
ORIGINAL STORED AT: ITO BRIDGE SECTION

IDAHO TRANSPORTATION DEPARTMENT

English PROJECT NO. \_\_\_\_\_

COMPRESSION SEAL EXPANSION JOINT

10° < SKEW < 30°

BRIDGE PLANS	
BRIDGE LRFD MANUAL, PAGE B14.1B	
COUNTY	KEY NO.
BRIDGE DRAWING NO.	SHEET
	OF