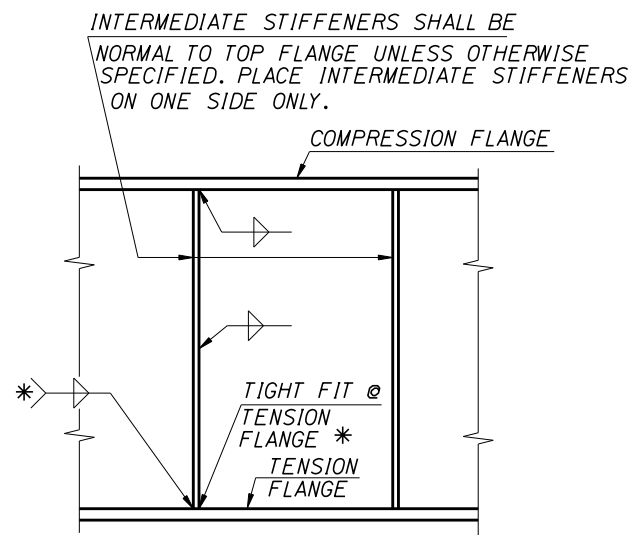
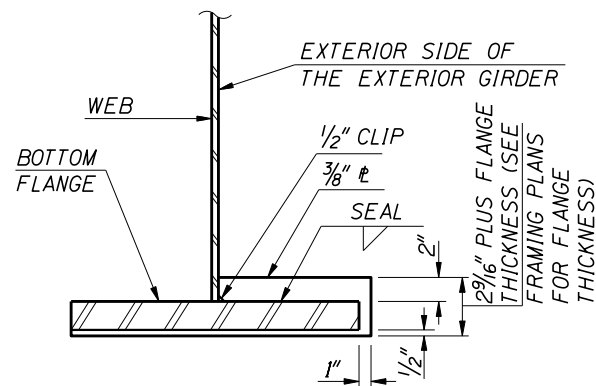


BEARING & JACKING STIFFENERS
NOT TO SCALE

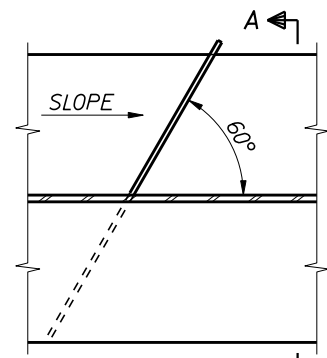


* WELD INTERMEDIATE STIFFENER TO TENSION FLANGE ONLY WHERE LATERAL BRACING DIAPHRAGMS OR CROSS FRAMES ARE ATTACHED TO STIFFENERS. TIGHT FIT AT TENSION FLANGE AT ALL OTHER LOCATIONS.

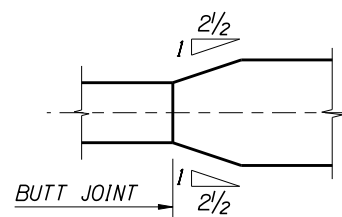
INTERMEDIATE STIFFENER DETAILS
NOT TO SCALE



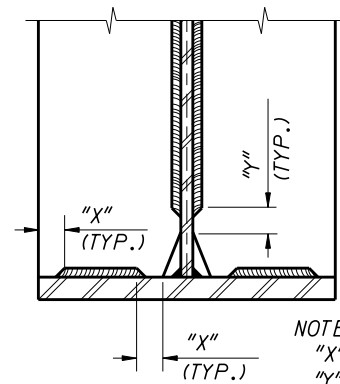
SECTION A-A



DRIP CONTROL BAR DETAIL
(EXTERIOR GIRDERS ONLY)
NOT TO SCALE

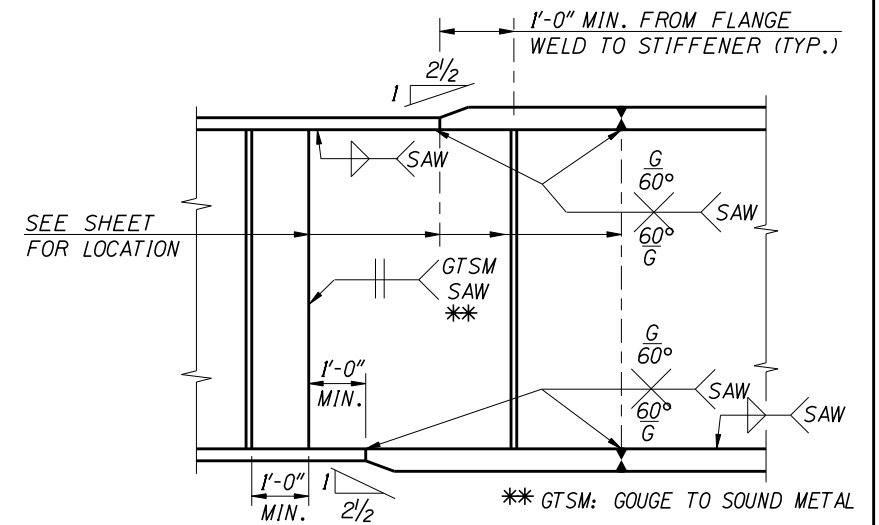


TYPICAL TRANSITION FOR FLANGE PLATE WIDTH
NOT TO SCALE



STIFFENER FILLET WELD TERMINATION DETAILS
NOT TO SCALE

NOTES:
"X" = $1/4$ " \pm $1/8$ "
"Y" = $1/2$ " \pm $1/4$ "

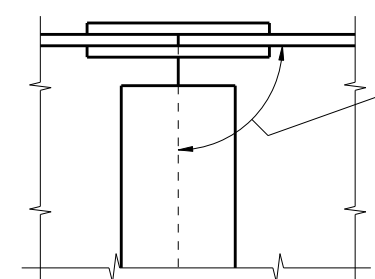


ASSEMBLY AND FABRICATION DETAILS
NOT TO SCALE

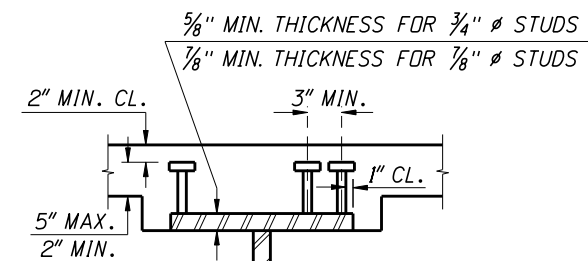
GENERAL STEEL NOTES

1. ALL STRUCTURAL STEEL SHALL CONFORM TO AASHTO SPECIFICATION M270 GRADE 50W UNLESS OTHERWISE NOTED ON THE PLANS.
2. AT DECK EXPANSION JOINTS, PAINT THE BEARING UNITS, END CROSS FRAMES, AND END OF EACH GIRDER IN ACCORDANCE WITH SUBSECTION 627.03 PART C. THE TOP SURFACE OF THE TOP FLANGE SHALL NOT BE PAINTED. BOLTED FAYING SURFACES SHALL BE PAINTED WITH ONLY THE PRIME COAT IN ACCORDANCE WITH SUBSECTION 627.03 PART C.
3. ALL BOLTED CONNECTIONS SHALL BE SLIP - CRITICAL JOINTS WITH CLASS B SURFACE CONDITIONS MADE WITH $7/8$ " ϕ HIGH STRENGTH BOLTS CONFORMING TO AASHTO M164 TYPE 3. THREADS (SHALL BE EXCLUDED FROM THE SHEAR PLANE) (MAY BE INCLUDED IN THE SHEAR PLANE). ALL CONTACT SURFACES OF THE BOLTED CONNECTIONS SHALL BE FIELD INSPECTED IMMEDIATELY PRIOR TO ASSEMBLY TO ENSURE THAT THE SURFACES ARE FREE OF ALL MILL SCALE, DIRT, ROAD OIL, AND OTHER FOREIGN MATERIAL.
4. STEEL GIRDER SUPERSTRUCTURE ERECTION SHALL BE COMPLETE FOR EACH SPAN AND TWO ADJACENT SPANS IN EACH DIRECTION, BEFORE PLACING FORMS.
5. NO WELDING SHALL BE PERMITTED IN THE TENSION OR STRESS REVERSAL ZONES OF THE GIRDERS EXCEPT AS SHOWN ON THE PLANS.
6. IF THE PLATE THICKNESS FOR PARALLEL GROOVE WELD EXCEEDS THE PREQUALIFIED THICKNESS LISTED IN D1.5 THEN V GROOVE WELD MAY BE SUBSTITUTED.
7. UNDER FULL DEAD LOAD AND DECK SHRINKAGE, THE GIRDER WEB SHALL BE VERTICAL THE FULL LENGTH OF THE GIRDER.
8. NO ADDITIONAL SHOP SPLICES ARE ALLOWED UNLESS APPROVED BY THE ENGINEER.

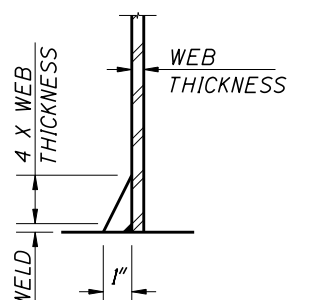
BOLTED FIELD SPLICES SHALL BE NORMAL TO TOP FLANGE UNLESS SPECIFIED OTHERWISE.



FIELD SPLICE ORIENTATION
NOT TO SCALE



WELD STUDS DETAIL
NOT TO SCALE



CLIP DETAILS
NOT TO SCALE

REVISIONS			
NO.	DATE	BY	DESCRIPTION
▲			
▲			
▲			
▲			

DESIGNED
DESIGN CHECKED
DETAILED
DWG. CHECKED
CORRECTIONS

SCALES SHOWN ARE FOR 34" X 22" PRINTS ONLY
CADD FILE NO.
\\brdg_stds\std_shts\lrfd\b06_1.dgn
DRAWING DATE:
JULY 2009

DATE:

IDAHO TRANSPORTATION DEPARTMENT

English
PROJECT NO.

STANDARD STEEL DETAILS

BRIDGE PLANS	
BRIDGE LRFD MANUAL, PAGE B6.1	
COUNTY	KEY NO.
BRIDGE DRAWING NO.	SHEET
	OF