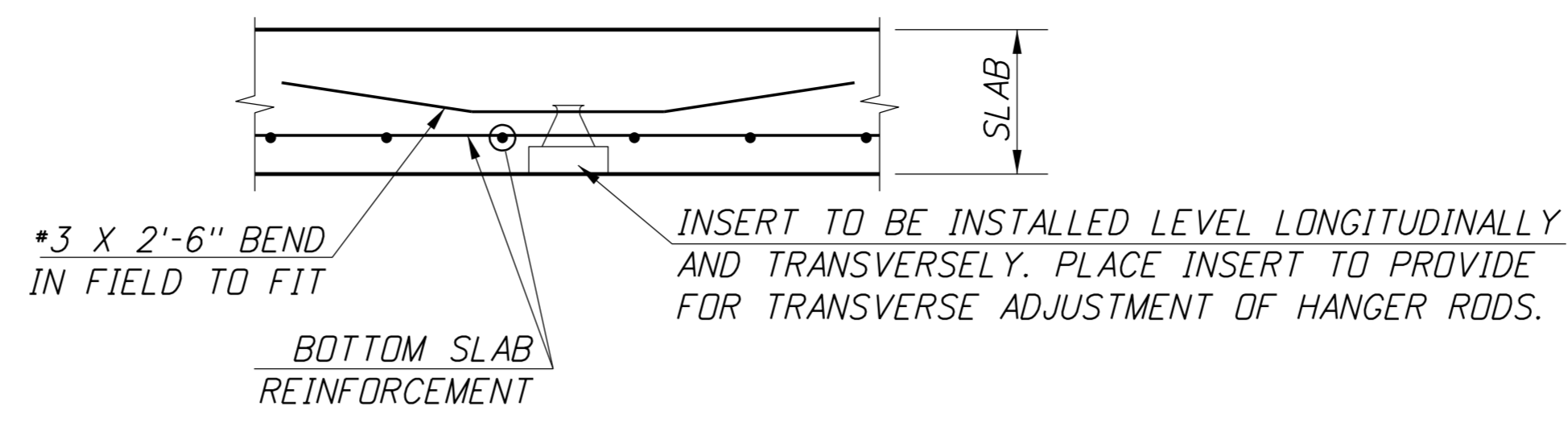


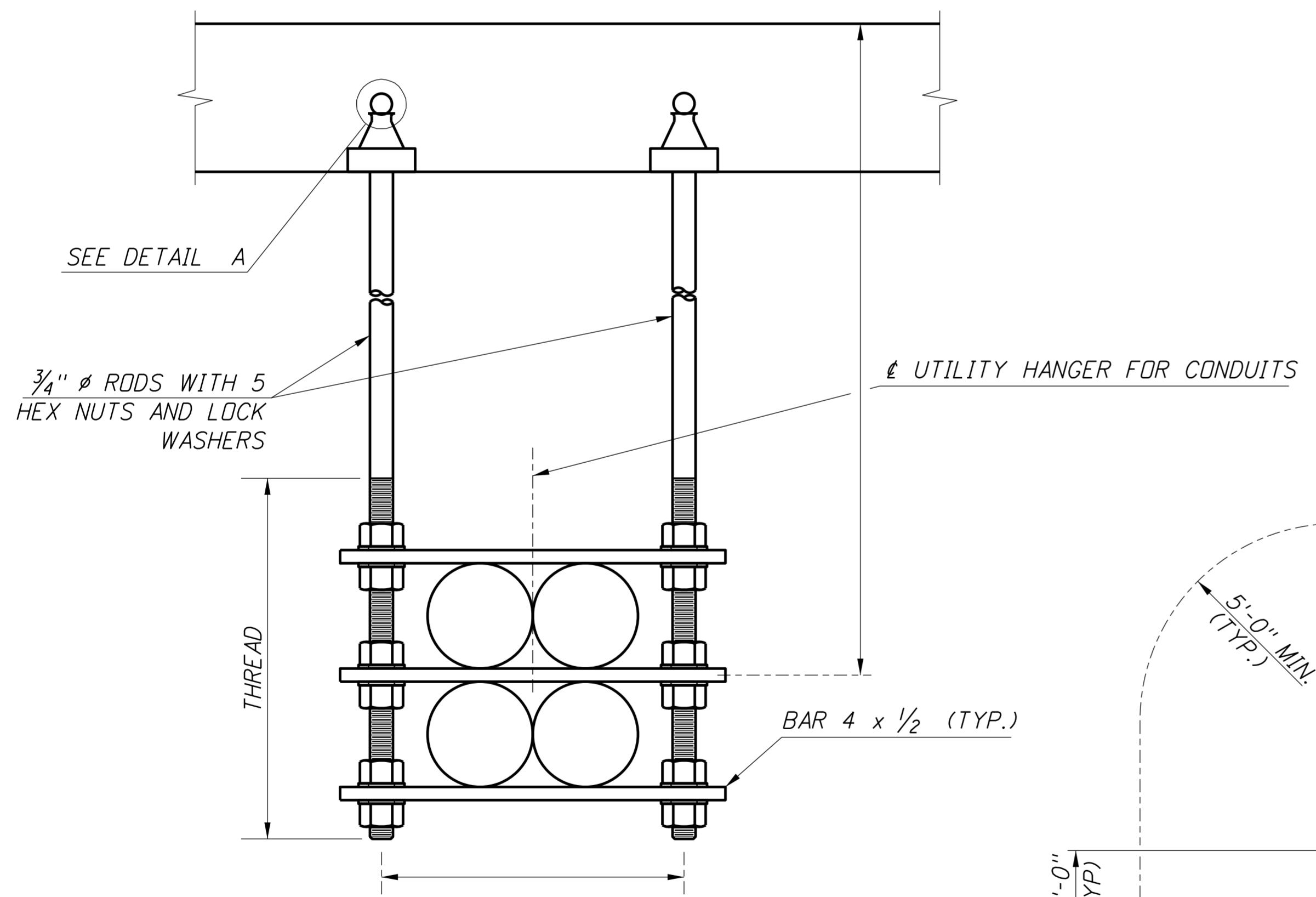
**INTERMEDIATE DIAPHRAGM
DETAILS**
3/8"=1'-0"

PVC INSERTS FOR STEEL CONDUIT.
EXTEND 6" EACH SIDE OF DIAPHRAGM.
CAP BOTH ENDS OF UNUSED INSERTS.

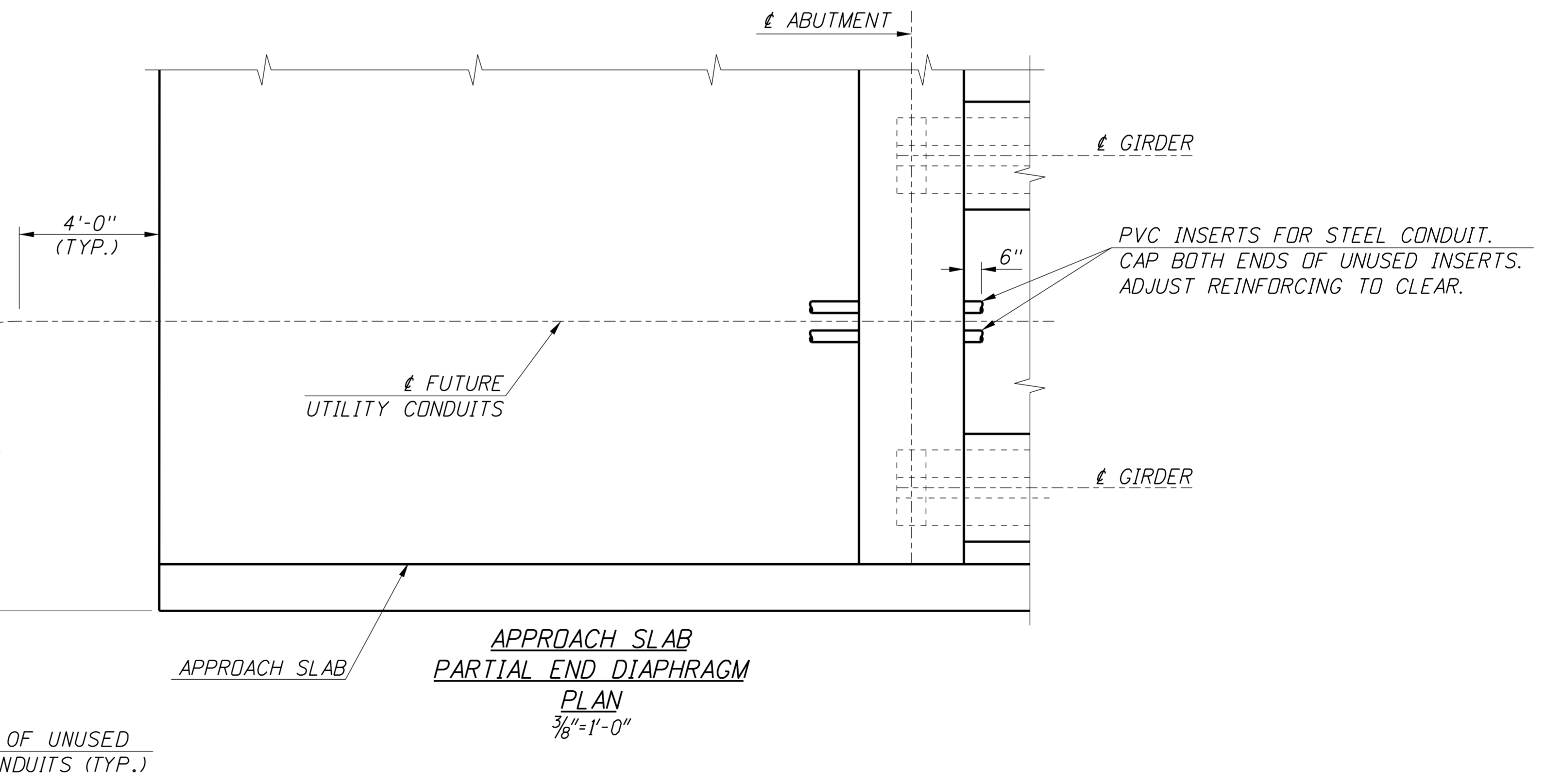


DETAIL A
N.T.S.

- NOTES**
1. UNUSED CONDUIT SHALL HAVE A PULL ROPE INSTALLED AND SHALL BE CAPPED AT BOTH ENDS.
 2. ALL MATERIALS SHALL BE GALVANIZED AFTER FABRICATION IN ACCORDANCE WITH AASHTO M111 OR AASHTO M232.
 3. ANY PAINTED SURFACES DAMAGED DURING CONSTRUCTION SHALL BE CLEANED AND PAINTED AS DIRECTED BY THE ENGINEER. ANY PAINT SPLATTER SHALL BE REMOVED FROM THE BRIDGE.
 4. CONCRETE INSERTS SHALL BE GRINNELL UNIVERSAL INSERT FIG. 282, UNISTRUT M26 SWIVEL CONCRETE INSERT, RICHMOND IASM, OR APPROVED EQUAL



MULTIPLE UTILITY DETAIL
N.T.S.



**APPROACH SLAB
PARTIAL END DIAPHRAGM
PLAN**
3/8"=1'-0"

REVISIONS				DESIGNED	SCALES SHOWN	IDaho TRANSPORTATION DEPARTMENT	English	UTILITY HANGERS FOR PRESTRESSED GIRDERS	BRIDGE PLANS		
NO.	DATE	BY	DESCRIPTION	DESIGN CHECKED	ARE FOR 34" X 22" PRINTS ONLY				PROJECT NO.	COUNTY	KEY NO.
△				DETAILED	CADD FILE NO.				BRIDGE LRFD MANUAL, PAGE B2.4B		
△				DWG. CHECKED	\\cadds\std_dgns\b02_4b.dgn				BRIDGE DRAWING NO.	SHEET	OF
△				CORRECTIONS	DRAWING DATE:						
△					FEB 2012						