

Proposed Improvements

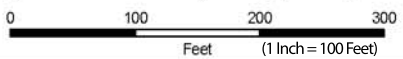
Legend

- Improvements to Local Network
- Frontage / Backage Roads
- ↑ Raised Median
- ↔ Shared Access
- ⊙ Consolidate Driveways
- ↘ Install Access on Crossroad
- ↔ Cross Access
- ⊙ Align Intersection
- ⊙ Potential Traffic Signal
- ⊙ Potential Pedestrian Xing Signal

Legend

- Stop sign
- ⊕ Signal
- ⊗ RR Xing
- ⊙ Yield
- 🚗 Garage
- ⊗ Obstruction
- ⊗ Fenced
- ⊗ Gated
- ▨ Paved
- ▨ Unpaved
- ⬢ Apron
- Curb Cut
- Center Line
- CL-Inv
- CL-NoPass
- CL-S
- LaneLineIn
- Edge Pavement
- Edge Median
- Edge Shoulder
- ◆ Milepost Marker
- 90' RW Dimension
- RW
- Lot Lines
- Median Center

US-95 Access Management Plan
ITD Project # A000(968); Key # 09968



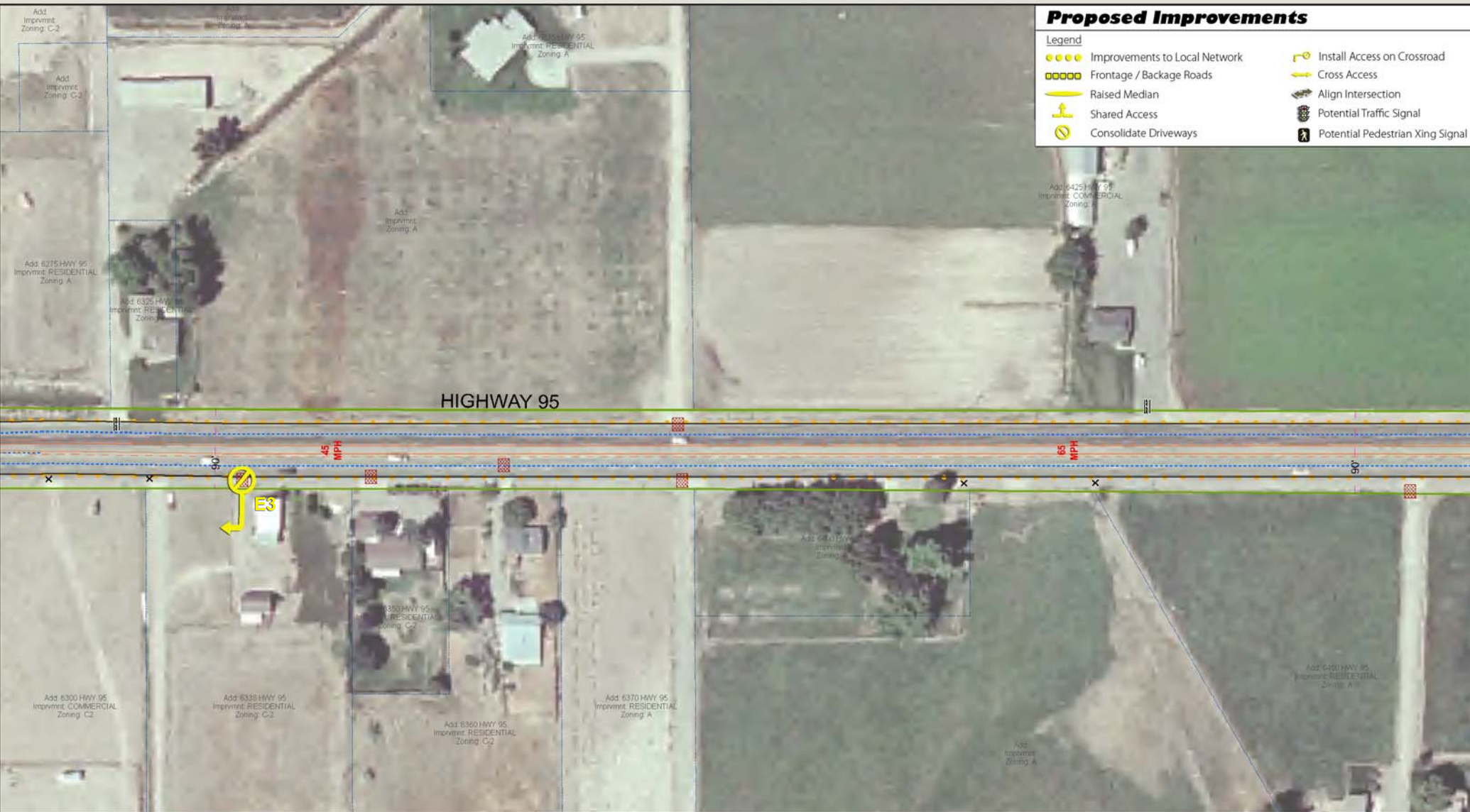
Map 6 MP 60.886 - MP 61.187

Imagery Source: Payette County
 Other Data Sources: Idaho Transportation Department, Payette County
 Map Date: Monday, June 8, 2009
 Q:\ITD\US95_AccessManagementPlan\map_docs\MapBookField.mxd

Proposed Improvements

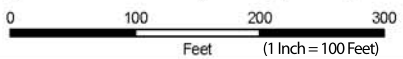
Legend

- Improvements to Local Network
- Frontage / Backage Roads
- Raised Median
- ⤴ Shared Access
- ⊘ Consolidate Driveways
- ⤴ Install Access on Crossroad
- ⤴ Cross Access
- ⤴ Align Intersection
- ⓧ Potential Traffic Signal
- ⓧ Potential Pedestrian Xing Signal



Legend	
● Stop sign	⤴ Garage
⊕ Signal	⊗ Obstruction
⊗ RR Xing	⊗ Fenced
⚠ Yield	⊗ Gated
▨ Paved	▨ Unpaved
⬆ Center Line	⬆ Edge Pavement
⬆ CL-Inv	⬆ Edge Median
⬆ CL-NoPass	⬆ Lane Line
⬆ CL-S	⬆ LaneLineIn
⬆ Median Center	⬆ Curb
⬆ 90' RW Dimension	⬆ Edge Shoulder
⬆ RW	⬆ Milepost Marker
⬆ Lot Lines	

US-95 Access Management Plan ITD Project # A000(968); Key # 09968



Map 7

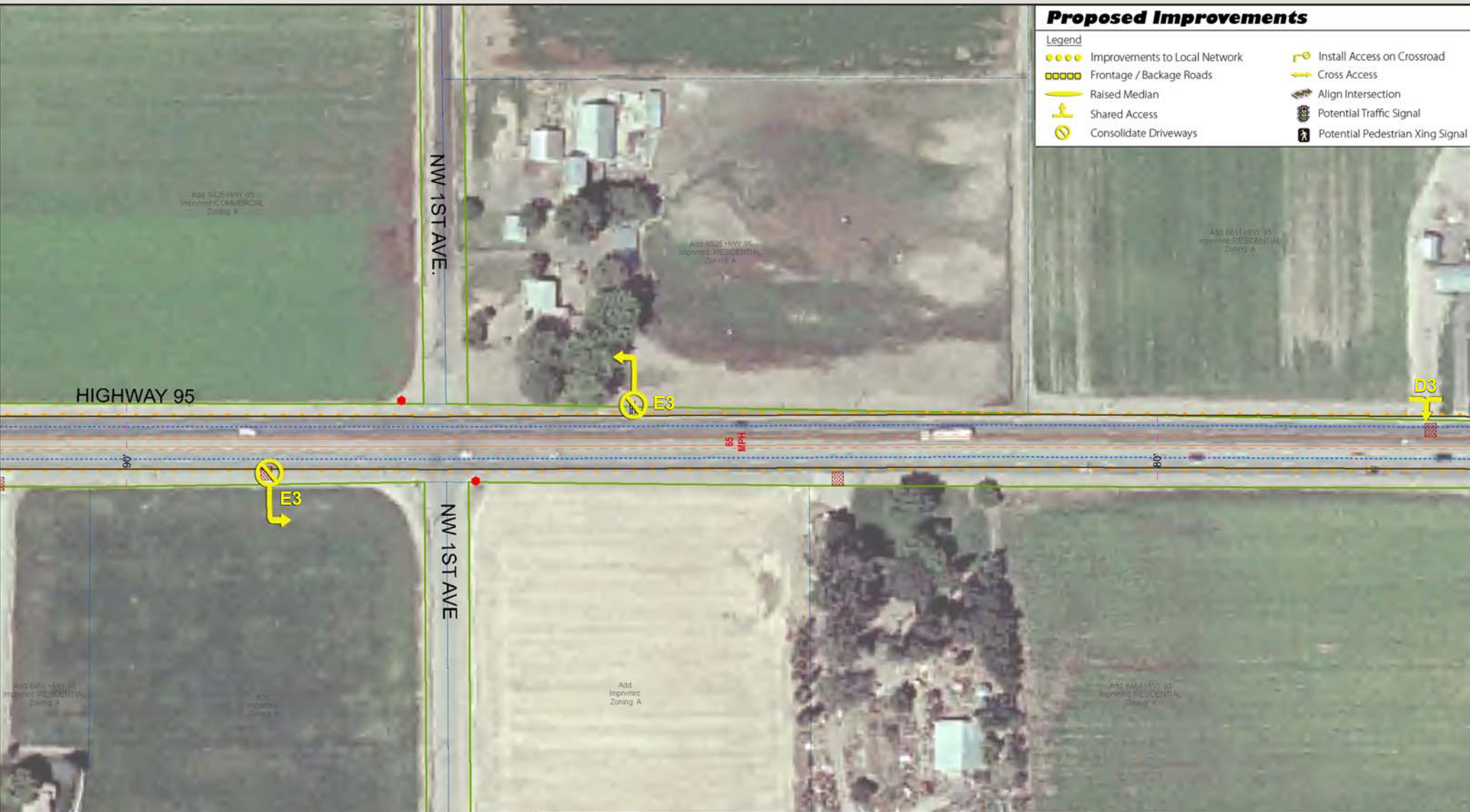
MP 61.187 - MP 61.483

Imagery Source: Payette County
 Other Data Sources: Idaho Transportation Department, Payette County
 Map Date: Monday, June 8, 2009
 Q:\ITD\US95_AccessManagementPlan\map_docs\MapBook\Final.mxd

Proposed Improvements

Legend

- Improvements to Local Network
- Frontage / Backage Roads
- Raised Median
- ⤴ Shared Access
- ⊘ Consolidate Driveways
- ⤴ Install Access on Crossroad
- ⤵ Cross Access
- ⊘ Align Intersection
- ⊘ Potential Traffic Signal
- ⊘ Potential Pedestrian Xing Signal

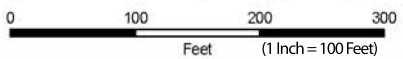


- #### Legend
- Stop sign
 - ⊕ Signal
 - ⊗ RR Xing
 - ⚠ Yield
 - ⊘ Garage
 - ⊘ Obstruction
 - ⊘ Fenced
 - ⊘ Gated
 - ▨ Paved
 - ▨ Unpaved
 - Apron
 - Curb Cut
 - Center Line
 - CL-Inv
 - CL-NoPass
 - CL-S
 - Edge Pavement
 - Edge Median
 - Edge Shoulder
 - Lane Line
 - LaneLineIn
 - Curb
 - Edge Shoulder
 - ◆ Milepost Marker
 - 90' RW Dimension
 - RW
 - Lot Lines
 - Median Center

US-95 Access Management Plan ITD Project # A000(968); Key # 09968



HDR ONE COMPANY
Many Solutions™



Map 8

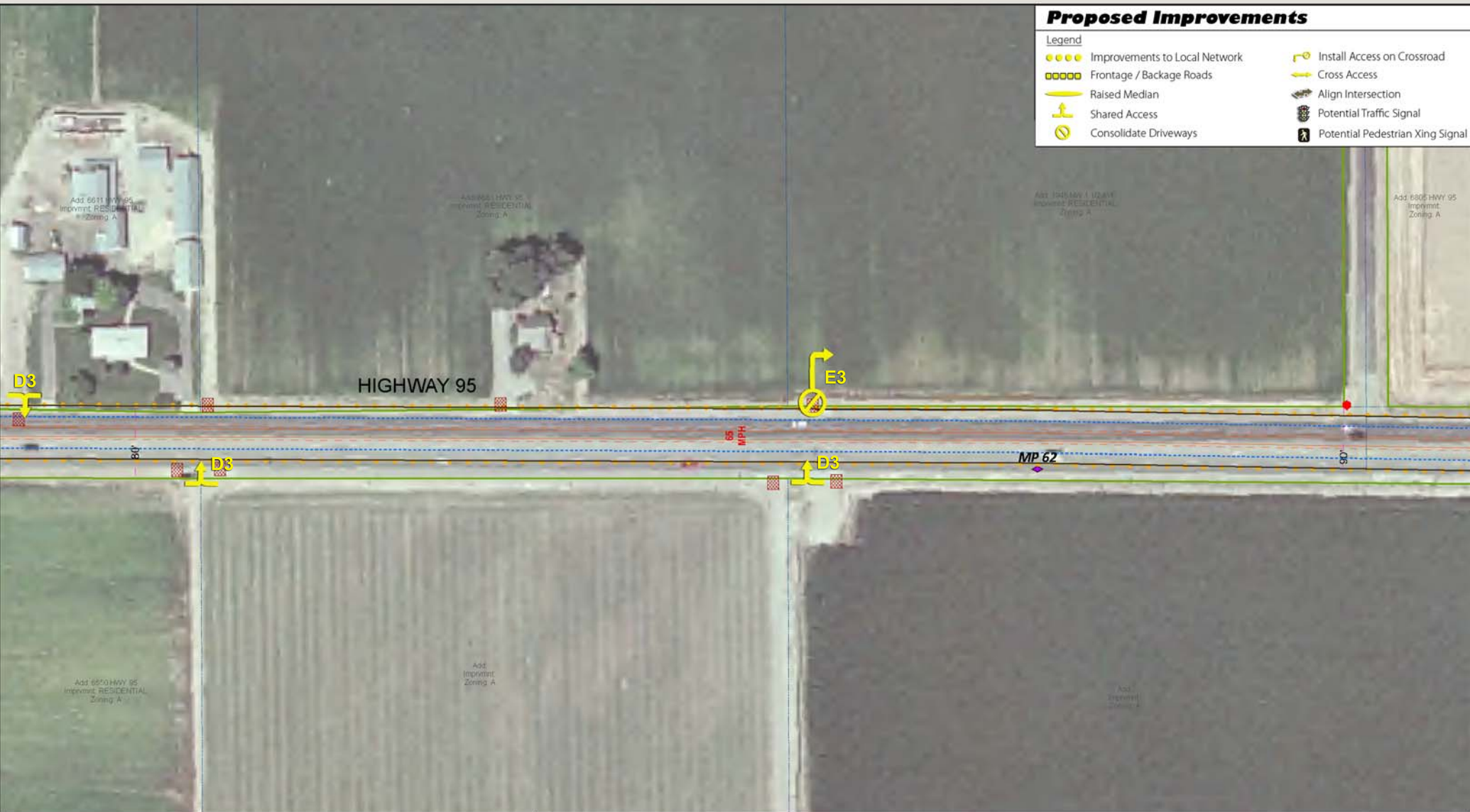
MP 61.483 - MP 61.785

Imagery Source: Payette County
Other Data Sources: Idaho Transportation Department, Payette County
Map Date: Monday, June 8, 2009
Q:\ITD\US95_AccessManagementPlan\map.docx\MapBookField.mxd

Proposed Improvements

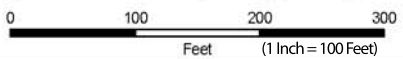
Legend

- Improvements to Local Network
- Frontage / Backage Roads
- Raised Median
- ⤴ Shared Access
- ⊘ Consolidate Driveways
- ⤴ Install Access on Crossroad
- ⤴ Cross Access
- ⊘ Align Intersection
- ⊘ Potential Traffic Signal
- ⊘ Potential Pedestrian Xing Signal



Legend	
● Stop sign	⤴ Garage
⊕ Signal	⊗ Obstruction
⊗ RR Xing	⊗ Fenced
⚠ Yield	⊗ Gated
▨ Paved	▨ Unpaved
⬢ Apron	● Curb Cut
— Center Line	— Edge Pavement
— CL-Inv	— Edge Median
— CL-NoPass	— Edge Shoulder
— CL-S	— Lane Line
— LaneLineIn	◆ Milepost Marker
— Median Center	— Lot Lines
90'	— RW Dimension
—	— RW

US-95 Access Management Plan ITD Project # A000(968); Key # 09968



HDR ONE COMPANY Many Solutions

Map 9

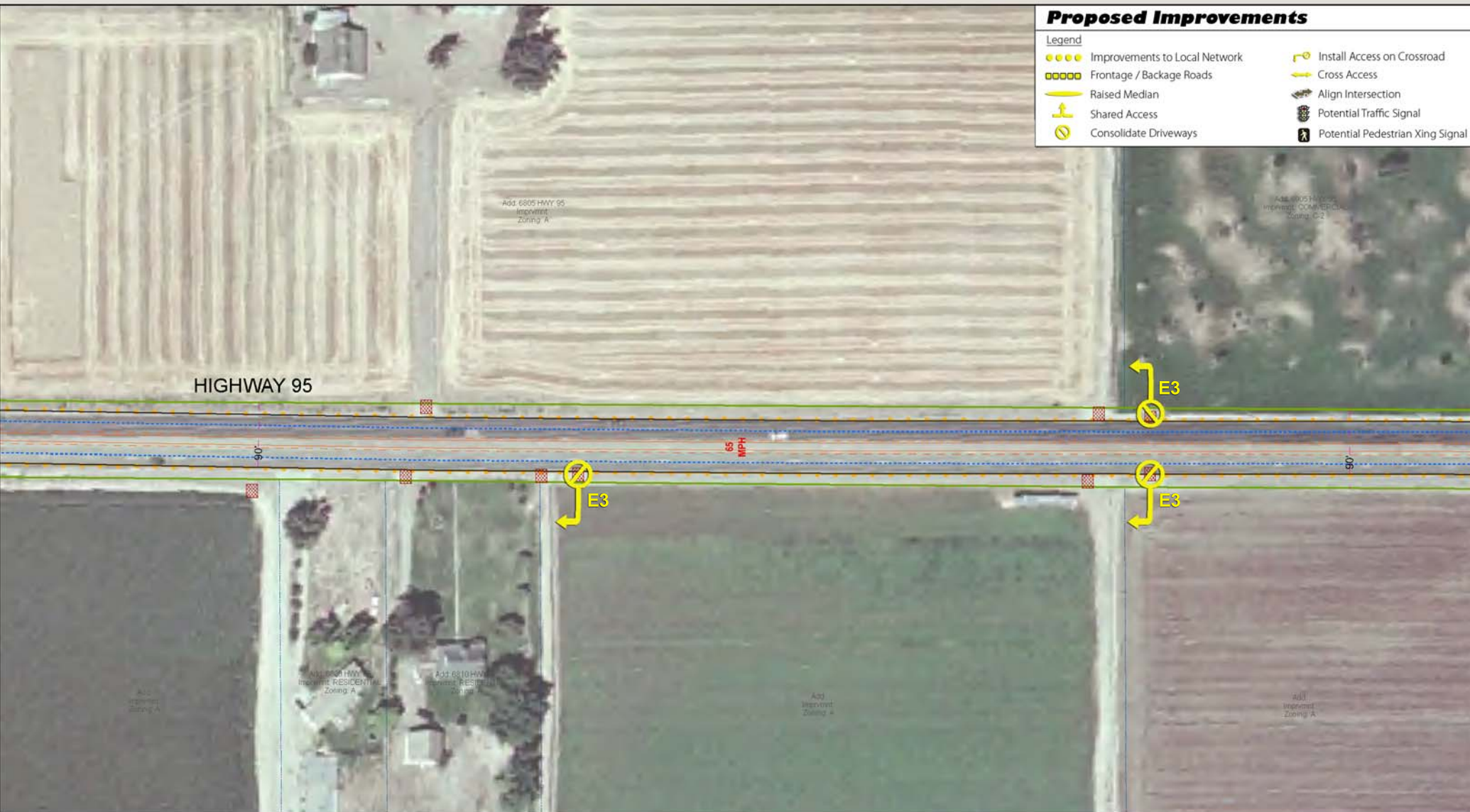
MP 61.785 - MP 62.088

Imagery Source: Payette County
Other Data Sources: Idaho Transportation Department, Payette County
Map Date: Monday, June 8, 2009
Q:\ITD\US95_AccessManagementPlan\map.docx\MapBookField.mxd

Proposed Improvements

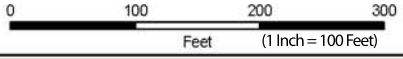
Legend

- Improvements to Local Network
- Frontage / Backage Roads
- Raised Median
- ⤴ Shared Access
- ⊘ Consolidate Driveways
- ↘ Install Access on Crossroad
- ↙ Cross Access
- ⊘ Align Intersection
- ⊘ Potential Traffic Signal
- ⊘ Potential Pedestrian Xing Signal



- #### Legend
- | | | | | | | |
|-------------|---------------|-----------------|---------------|-----------------|-------------------|------------------|
| ● Stop sign | ⊘ Garage | ▨ Paved | — Center Line | — Edge Pavement | — Curb | 90' RW Dimension |
| ⊕ Signal | ⊘ Obstruction | ▨ Unpaved | — CL-Inv | — Edge Median | — Edge Shoulder | — RW |
| ⊗ RR Xing | ⊘ Fenced | ⊕ Apron | — CL-NoPass | — Lane Line | ◆ Milepost Marker | — Lot Lines |
| ⚠ Yield | ⊗ Gated | ● Curb Cut | — CL-S | — LaneLineIn | | |
| | | — Median Center | | | | |

US-95 Access Management Plan ITD Project # A000(968); Key # 09968



Map 10

MP 62.088 - MP 62.39

Imagery Source: Payette County
 Other Data Sources: Idaho Transportation Department, Payette County
 Map Date: Monday, June 8, 2009
 Q:\ITD\US95_AccessManagementPlan\map_book\MapBookField.mxd

