



### Proposed Improvements

#### Legend

- Improvements to Local Network
- Frontage / Backage Roads
- Raised Median
- ⤴ Shared Access
- ⊘ Consolidate Driveways
- ⤴ Install Access on Crossroad
- ⤴ Cross Access
- ⊘ Align Intersection
- ⊘ Potential Traffic Signal
- ⊘ Potential Pedestrian Xing Signal

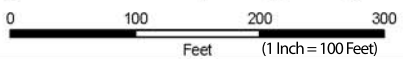


- #### Legend
- Stop sign
  - ⊕ Signal
  - ⊗ RR Xing
  - ⊗ Yield
  - ⊗ Garage
  - ⊗ Obstruction
  - ⊗ Fenced
  - ⊗ Gated
  - ▨ Paved
  - ▨ Unpaved
  - ▨ Apron
  - ▨ Curb Cut
  - Center Line
  - CL-Inv
  - CL-NoPass
  - CL-S
  - Edge Pavement
  - Edge Median
  - Edge Shoulder
  - Lane Line
  - LaneLineIn
  - Curb
  - Edge Shoulder
  - ◆ Milepost Marker
  - 90' RW Dimension
  - RW
  - Lot Lines
  - Median Center

## US-95 Access Management Plan ITD Project # A000(968); Key # 09968



HDR ONE COMPANY Many Solutions™



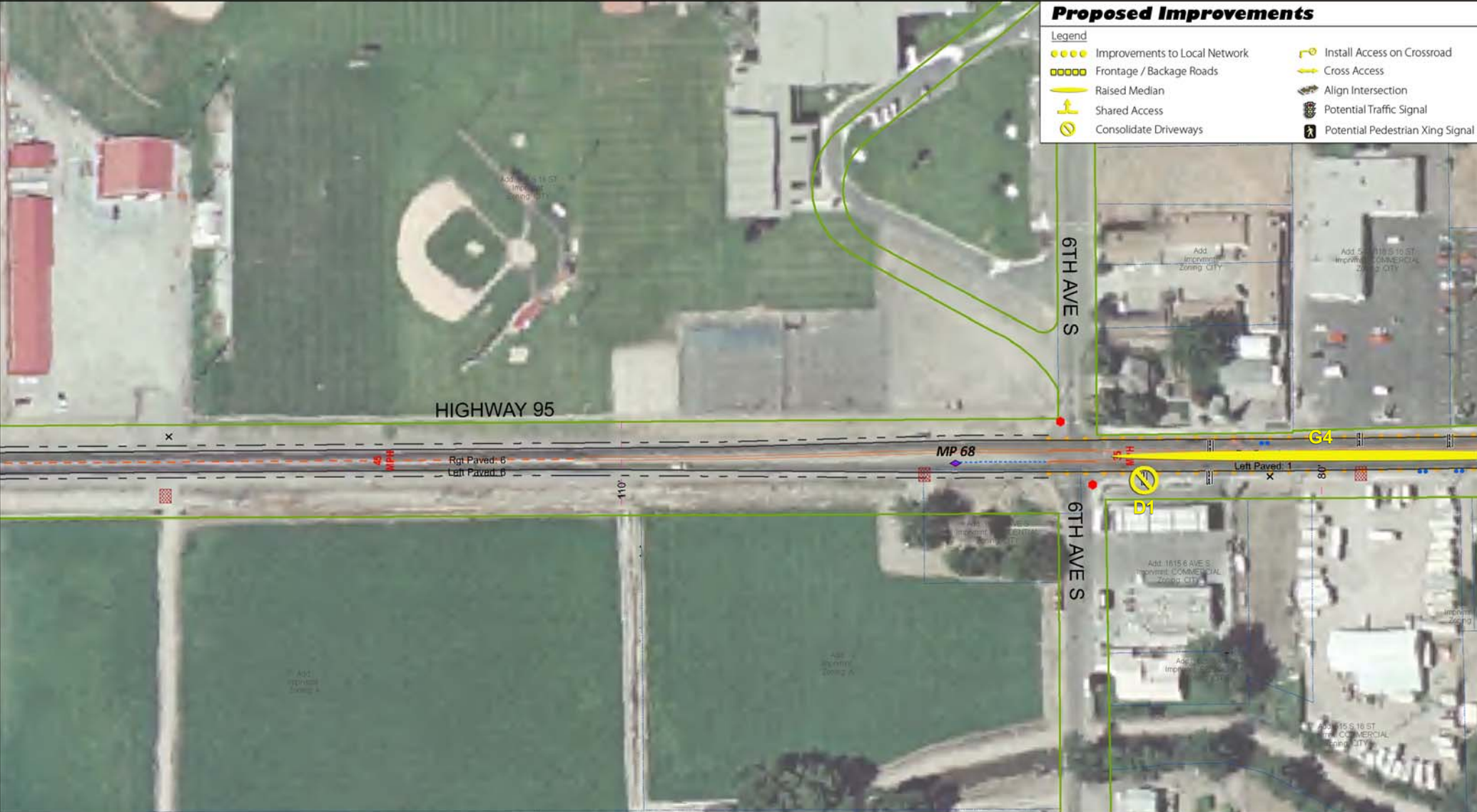
# Map 27

MP 67.497 - MP 67.803

Imagery Source: Payette County  
Other Data Sources: Idaho Transportation Department, Payette County  
Map Date: Monday, June 6, 2009  
Q:\ITD\US95\_AccessManagementPlan\map\_docs\MapBookField.mxd

### Proposed Improvements

- |                                    |                                    |
|------------------------------------|------------------------------------|
| <b>Legend</b>                      |                                    |
| ●●●● Improvements to Local Network | 🚦 Install Access on Crossroad      |
| □□□□ Frontage / Backage Roads      | 🚦 Cross Access                     |
| 🚦 Raised Median                    | 🚦 Align Intersection               |
| 🚦 Shared Access                    | 🚦 Potential Traffic Signal         |
| 🚦 Consolidate Driveways            | 🚦 Potential Pedestrian Xing Signal |

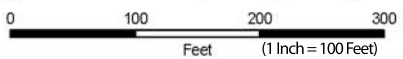


- |             |               |            |                 |                 |                   |             |                |
|-------------|---------------|------------|-----------------|-----------------|-------------------|-------------|----------------|
| ● Stop sign | 🚗 Garage      | ▨ Paved    | — Center Line   | — Edge Pavement | — Curb            | 90°         | — RW Dimension |
| ⊕ Signal    | ⊗ Obstruction | ▨ Unpaved  | — CL-Inv        | — Edge Median   | — Edge Shoulder   | — RW        |                |
| ⊗ RR Xing   | ⊗ Fenced      | ● Apron    | — CL-NoPass     | — Lane Line     | ◆ Milepost Marker | — Lot Lines |                |
| ▽ Yield     | ⊗ Gated       | ● Curb Cut | — CL-S          | — LaneLineIn    |                   |             |                |
|             |               |            | — Median Center |                 |                   |             |                |

## US-95 Access Management Plan ITD Project # A000(968); Key # 09968



HDR ONE COMPANY  
Many Solutions™



# Map 28

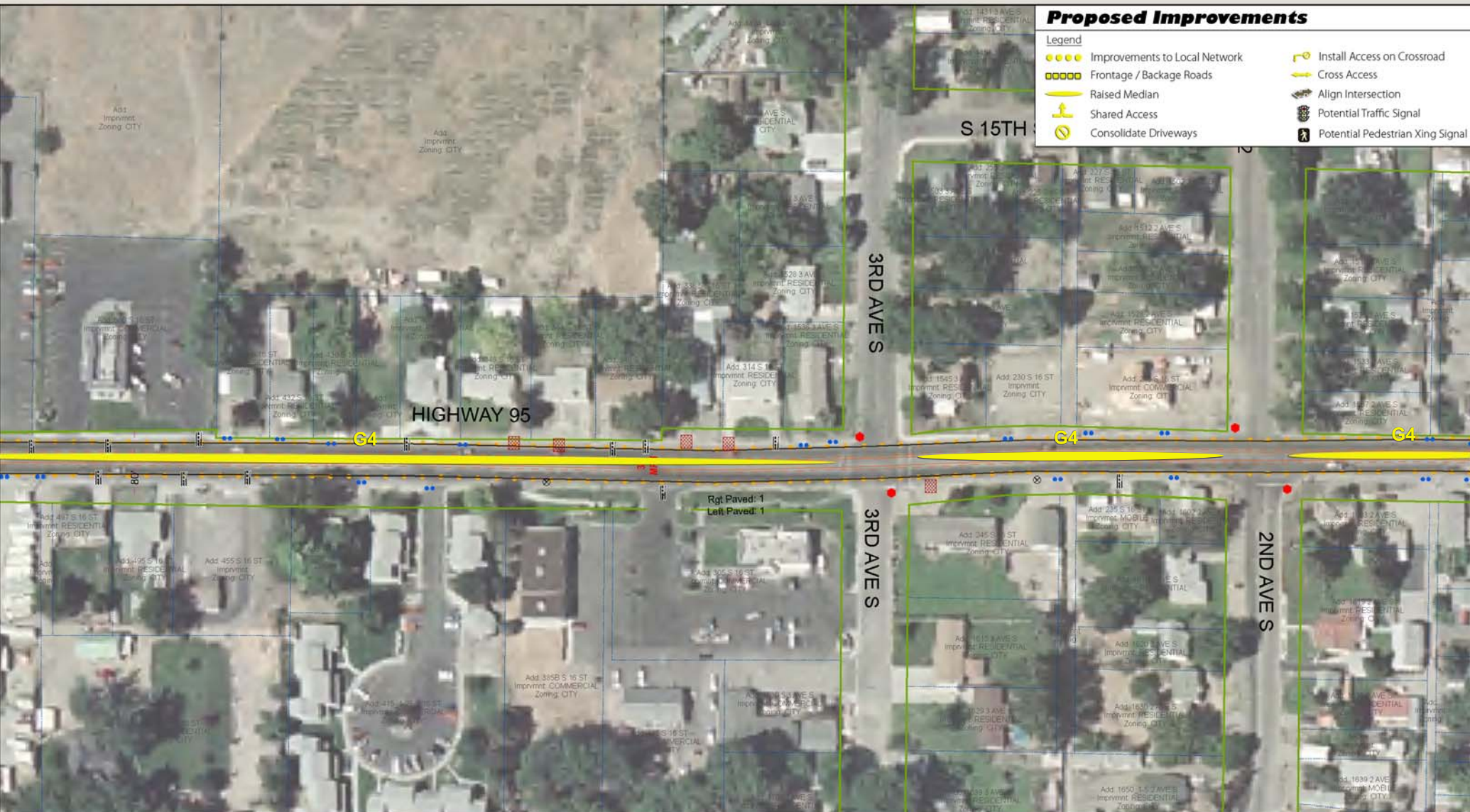
MP 67.803 - MP 68.105

Imagery Source: Payette County  
Other Data Sources: Idaho Transportation Department, Payette County  
Map Date: Monday, June 6, 2009  
Q:\ITD\US95\_AccessManagement\Plan\map\_book\MapBookField.mxd

### Proposed Improvements

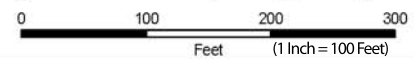
#### Legend

- Improvements to Local Network
- Frontage / Backage Roads
- ▬▬▬▬ Raised Median
- ⤴ Shared Access
- ⊗ Consolidate Driveways
- ⤴ Install Access on Crossroad
- ⤴ Cross Access
- ⊗ Align Intersection
- ⊗ Potential Traffic Signal
- ⊗ Potential Pedestrian Xing Signal



Legend	
<span style="color: red;">●</span> Stop sign	<span style="color: red;">⊗</span> Obstruction
<span style="color: red;">+</span> Signal	<span style="color: red;">⊗</span> Fenced
<span style="color: red;">X</span> RR Xing	<span style="color: red;">X</span> Gated
<span style="color: red;">▽</span> Yield	<span style="color: red;">●</span> Curb Cut
<span style="color: blue;">▬▬▬▬</span> Paved	<span style="color: blue;">▬▬▬▬</span> Center Line
<span style="color: blue;">▬▬▬▬</span> Unpaved	<span style="color: blue;">▬▬▬▬</span> Edge Pavement
<span style="color: blue;">●</span> Apron	<span style="color: blue;">▬▬▬▬</span> CL-Inv
<span style="color: blue;">●</span> Curb Cut	<span style="color: blue;">▬▬▬▬</span> CL-NoPass
<span style="color: blue;">▬▬▬▬</span> Median Center	<span style="color: blue;">▬▬▬▬</span> Lane Line
<span style="color: blue;">▬▬▬▬</span> Edge Median	<span style="color: blue;">▬▬▬▬</span> LaneLineIn
<span style="color: blue;">▬▬▬▬</span> Edge Shoulder	<span style="color: blue;">▬▬▬▬</span> Milepost Marker
<span style="color: blue;">▬▬▬▬</span> 90'	<span style="color: blue;">▬▬▬▬</span> Lot Lines
<span style="color: blue;">▬▬▬▬</span> RW	
<span style="color: blue;">▬▬▬▬</span> RW Dimension	

## US-95 Access Management Plan ITD Project # A000(968); Key # 09968



# Map 29

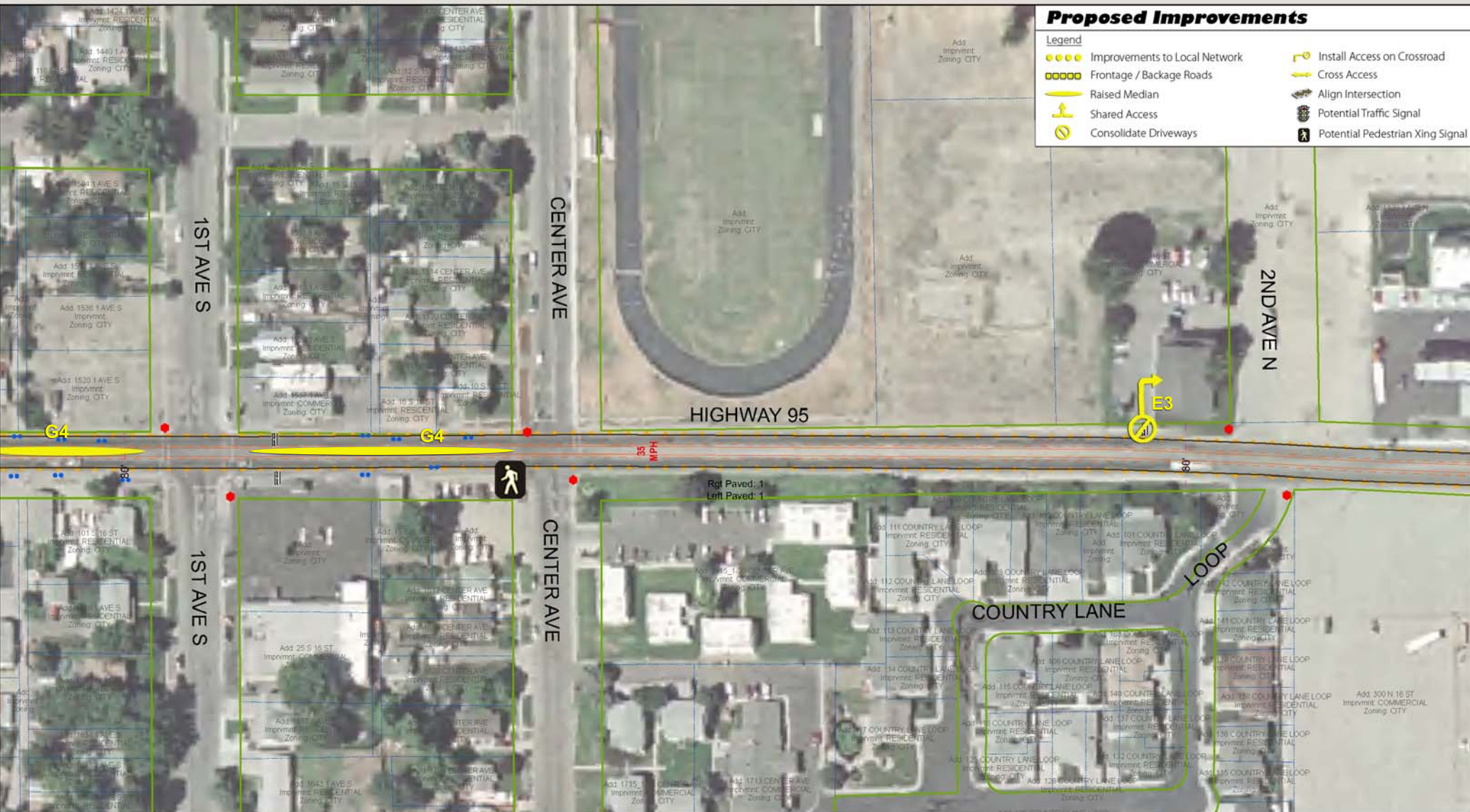
**MP 68.105 - MP 68.409**

Imagery Source: Payette County  
 Other Data Sources: Idaho Transportation Department, Payette County  
 Map Date: Monday, June 8, 2009  
 Q:\ITD\US95\_AccessManagementPlan\map\_book\MapBookField.mxd

### Proposed Improvements

#### Legend

- Improvements to Local Network
- Frontage / Backage Roads
- Raised Median
- ⤴ Shared Access
- ⊘ Consolidate Driveways
- ⤴ Install Access on Crossroad
- ⤴ Cross Access
- ⤴ Align Intersection
- ⊘ Potential Traffic Signal
- ⊘ Potential Pedestrian Xing Signal

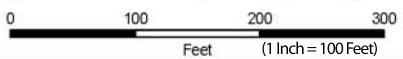


Legend																								
<span style="color: red;">●</span> Stop sign	<span style="color: red;">⊘</span> Signal	<span style="color: red;">⊘</span> RR Xing	<span style="color: red;">⊘</span> Yield	<span style="color: red;">⊘</span> Garage	<span style="color: red;">⊘</span> Obstruction	<span style="color: red;">⊘</span> Fenced	<span style="color: red;">⊘</span> Gated	<span style="color: red;">⊘</span> Curb Cut	<span style="color: red;">—</span> Paved	<span style="color: red;">—</span> Unpaved	<span style="color: red;">—</span> Apron	<span style="color: red;">—</span> Curb	<span style="color: red;">—</span> Edge Pavement	<span style="color: red;">—</span> Edge Median	<span style="color: red;">—</span> Edge Shoulder	<span style="color: red;">—</span> Milepost Marker	<span style="color: red;">—</span> 90°	<span style="color: red;">—</span> RW Dimension	<span style="color: red;">—</span> CL-Line	<span style="color: red;">—</span> CL-Inv	<span style="color: red;">—</span> CL-NoPass	<span style="color: red;">—</span> Lane Line	<span style="color: red;">—</span> LaneLineIn	<span style="color: red;">—</span> Lot Lines

## US-95 Access Management Plan ITD Project # A000(968); Key # 09968



**HDR** ONE COMPANY  
Many Solutions™



# Map 30

**MP 68.409 - MP 68.715**

Imagery Source: Payette County  
Other Data Sources: Idaho Transportation Department, Payette County  
Map Date: Monday, June 6, 2009  
Q:\ITD\US95\_AccessManagementPlan\map\_book\MapBookField.mxd